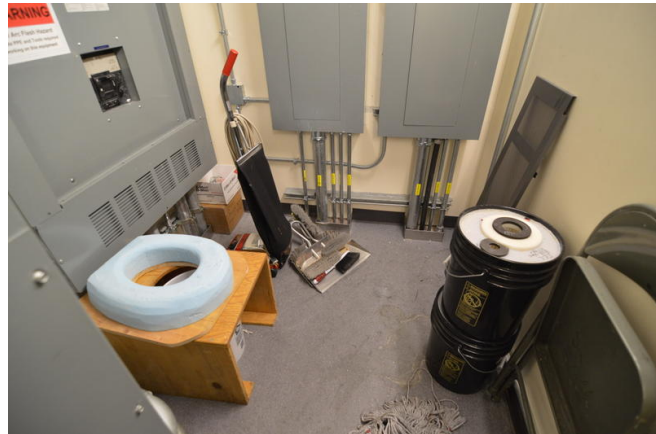


ICL Photo Request  
3-14-2013



Electrical Room 159"x84"



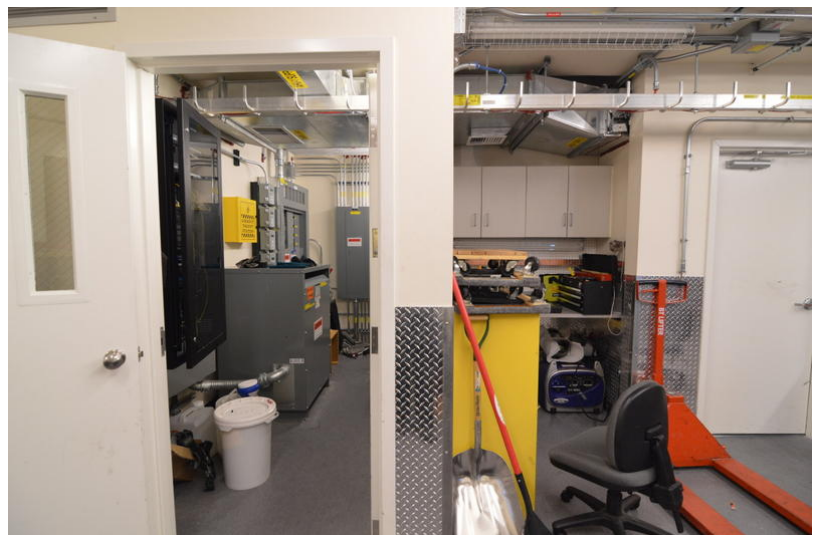
Back wall



Ceiling



Left wall, from doorway



Right Wall

ICL Photo Request  
3-14-2013



Left Wall

Air Handler Room



Electrical room  
Behind this wall

64"

70"

78" x 50" x 47"

35"





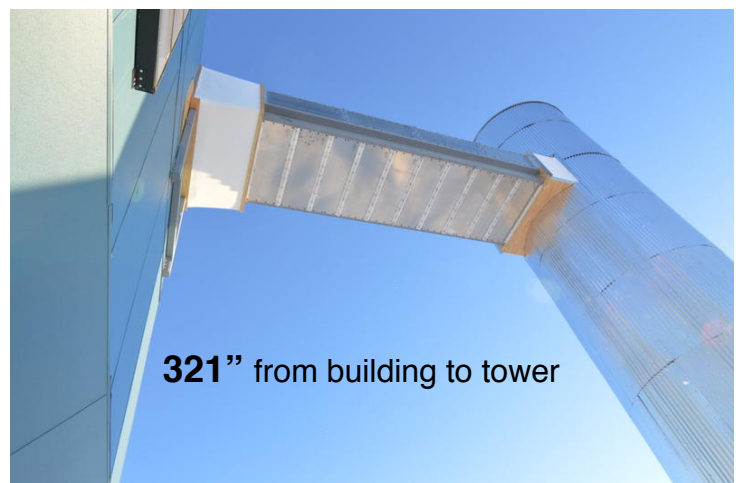
Door into Air handler room from outside

Underneath ICL



Left Tower

Right Tower



ICL Photo Request  
3-14-2013

Inside the left tower there are two platforms with a ladder leading to the first platform, then a second set of rungs leading to the second platforms



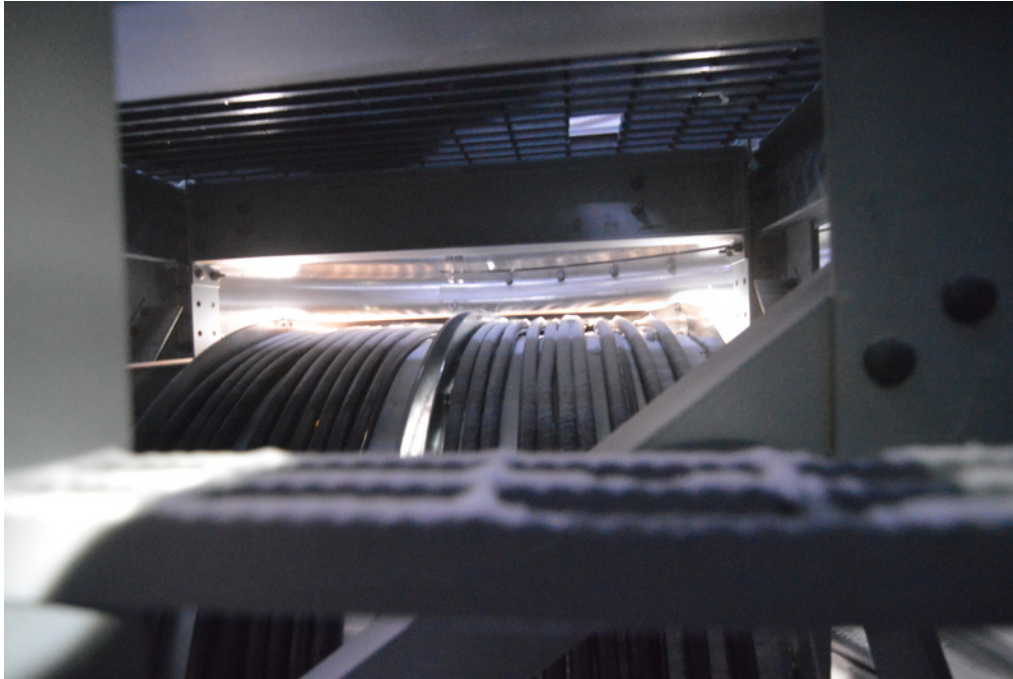
The tower inside diameter is 117"



The ladder well is  
26" x 23" at the  
highest point of the  
arch



ICL Photo Request  
3-14-2013



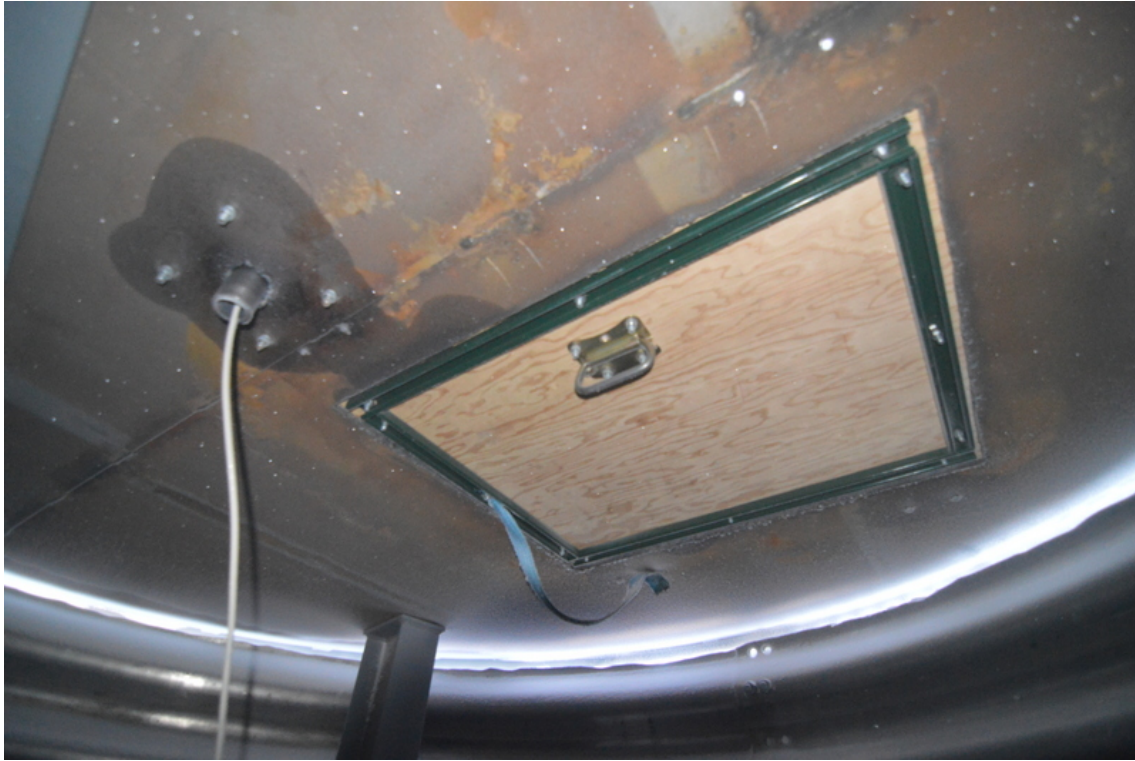
The hole into the  
second floor of  
ICL



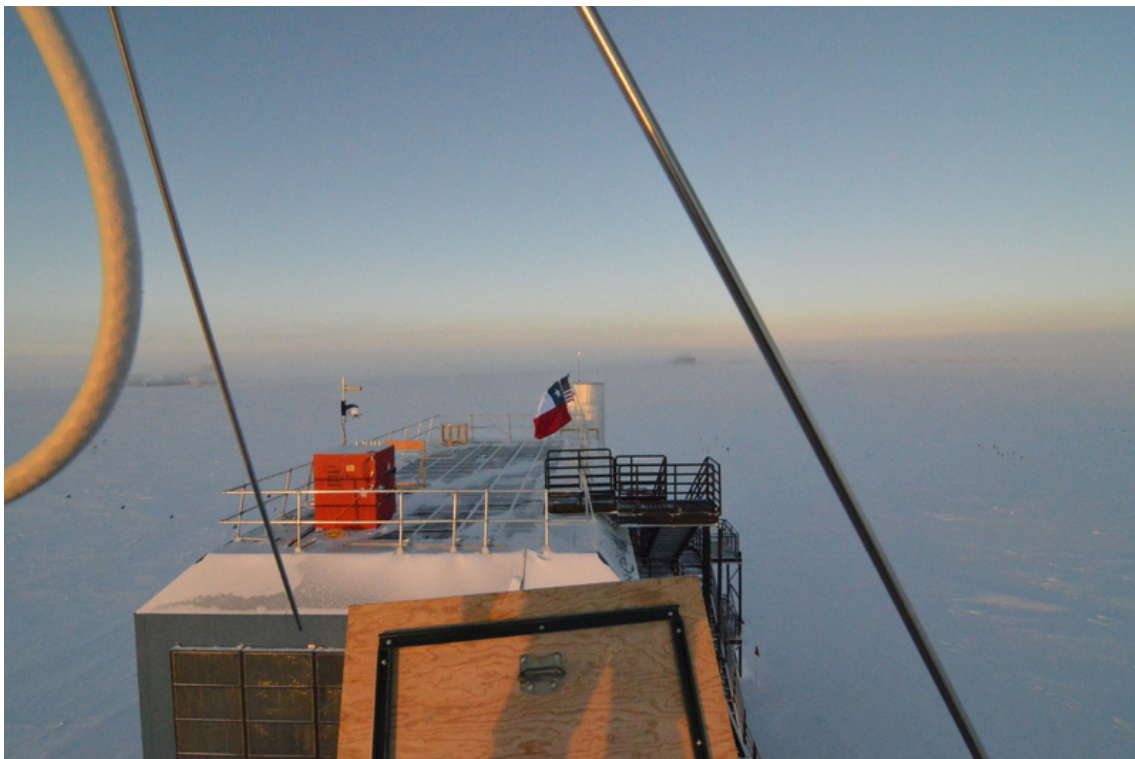
View from the  
second set of  
ladder rungs

The second  
platform on top is  
73" x 50" and 91"  
of headroom

ICL Photo Request  
3-14-2013



The trap door on top, which is 30" x 35"



The top of the tower is 126", there is an antenna on the top