

Installation of the drivers for the USB to RS485 Converter K-104

Contents

CONTENTS	1
GENERAL INSTRUCTIONS	1
IMPORTANT	1
INSTALLATION INSTRUCTIONS	1
COM-PORT	6
<i>WHERE TO FIND THE VIRTUAL COM-PORT NUMBER</i>	6
<i>HOW TO CHANGE THE COM-PORT NUMBER</i>	6
UNINSTALL	8
DRIVER	8

General Instructions

These notes describe the installation of the USB Converter K-104 for Windows based platforms.

The following instructions apply to Windows XP. However, the installation is similar if you use another operating system like Windows Vista, Windows 2000.

It's recommended to install the driver manually according to the installation instructions.



Important

Two different drivers need to be installed. One for the identification of the device K-104 and the other for the creation of a virtual COM-Port.

The virtual **COM-Port number** needs to be between **COM1..COM9**, otherwise it will not work!!

For driver installation you **have to be logged in as an administrator** on your operating system.

Installation Instructions

Follow these steps to properly install your USB Converter:

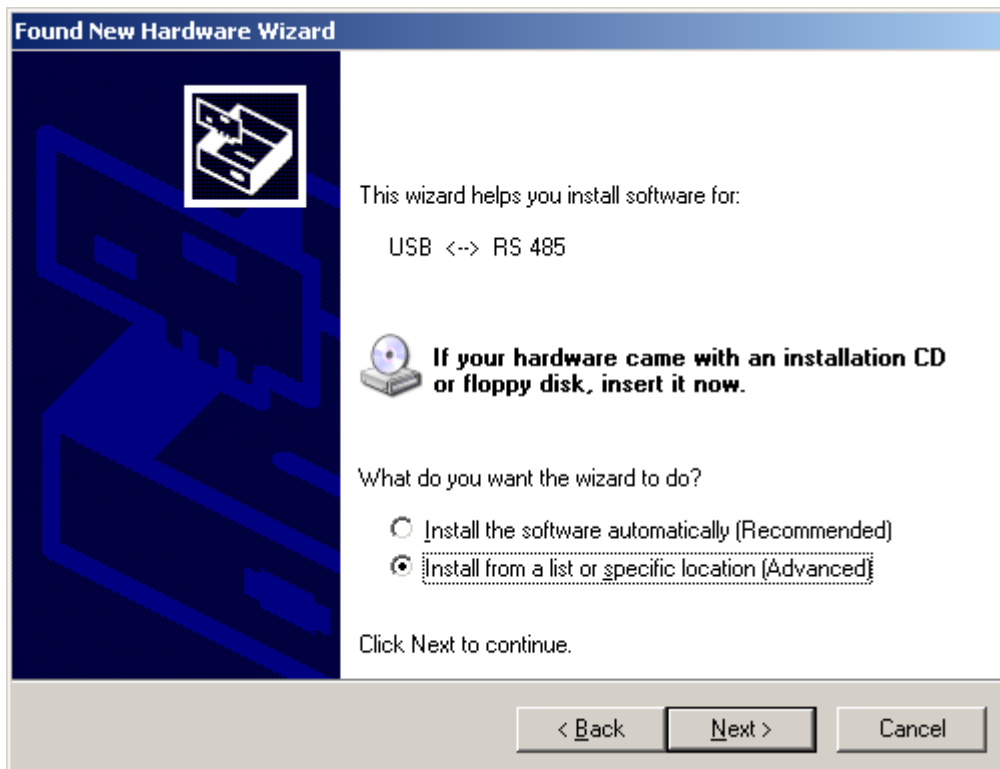
1. Insert the delivered Disc into your CD-Drive (Disc: K-104 USB Converter/Software driver)
2. Connect the Converter to a free USB Port



3. Wait until the Hardware assistant automatically starts
4. Tick the Checkbox “No, not this time” and press the button “Next” to continue

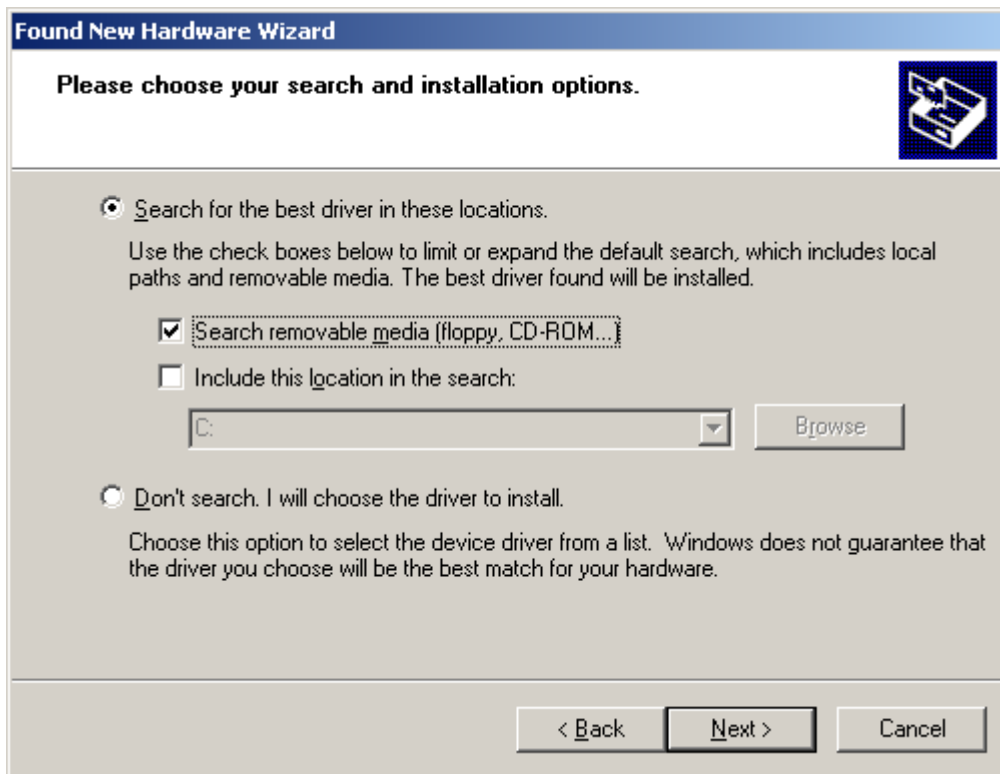


5. Mark the second Checkbox (choose Advanced) and press “Next” to continue.



6. Mark “Search for the best driver in these locations” and tick “Search removable media (floppy, CD-ROM...)”. Press “Next” to continue.





7. Click on the button “Finish”.

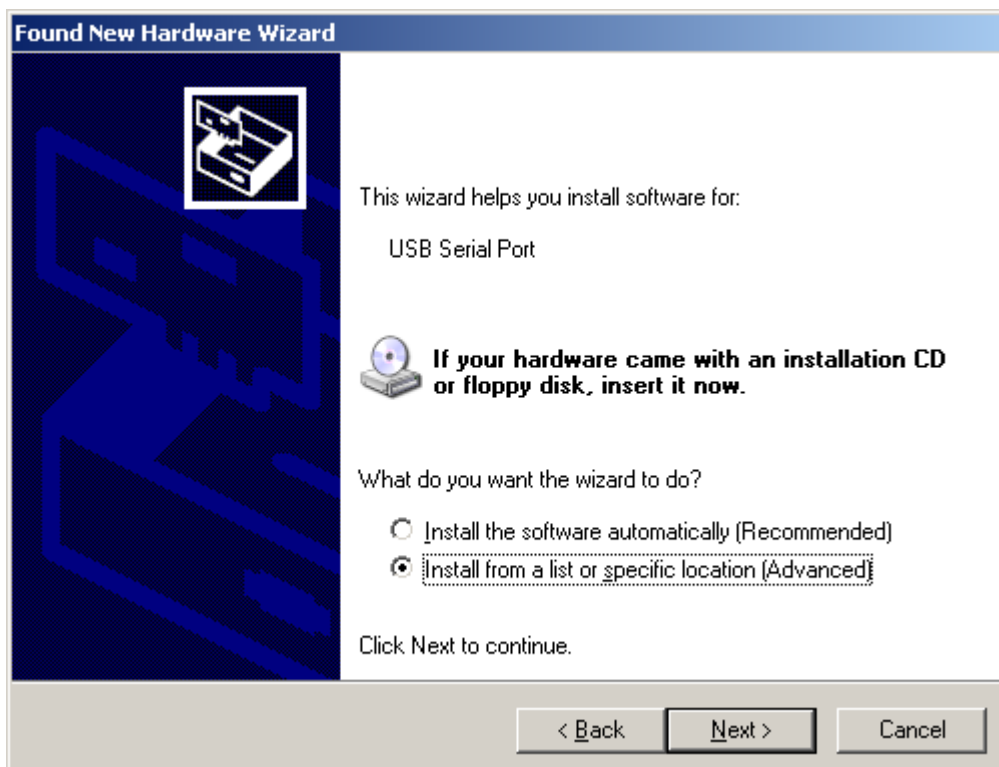


8. The installation of the first driver (identification of the K104) has now successfully been completed.
9. Wait until the Hardware assistant restarts to install the second driver (virtual COM-Port)
10. Tick the Checkbox “No, not this time” and press the button “Next” to continue
-



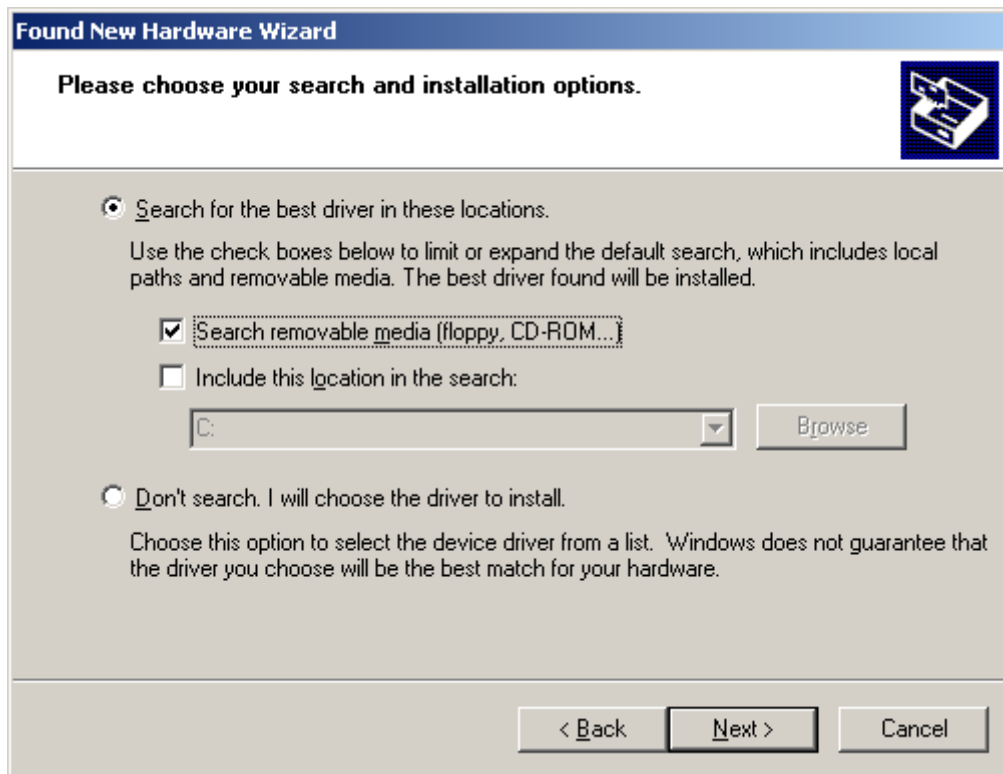


11. Mark the second Checkbox (choose the driver yourself) and press „Next“ to continue



12. Mark “Search for the best driver in these locations” and tick ”Search removable media (floppy, CD-ROM...)“. Press “Next” to continue.





13. Click on the button "Finish".



14. Both drivers have now been installed. Please read next Chapter COM-Port.

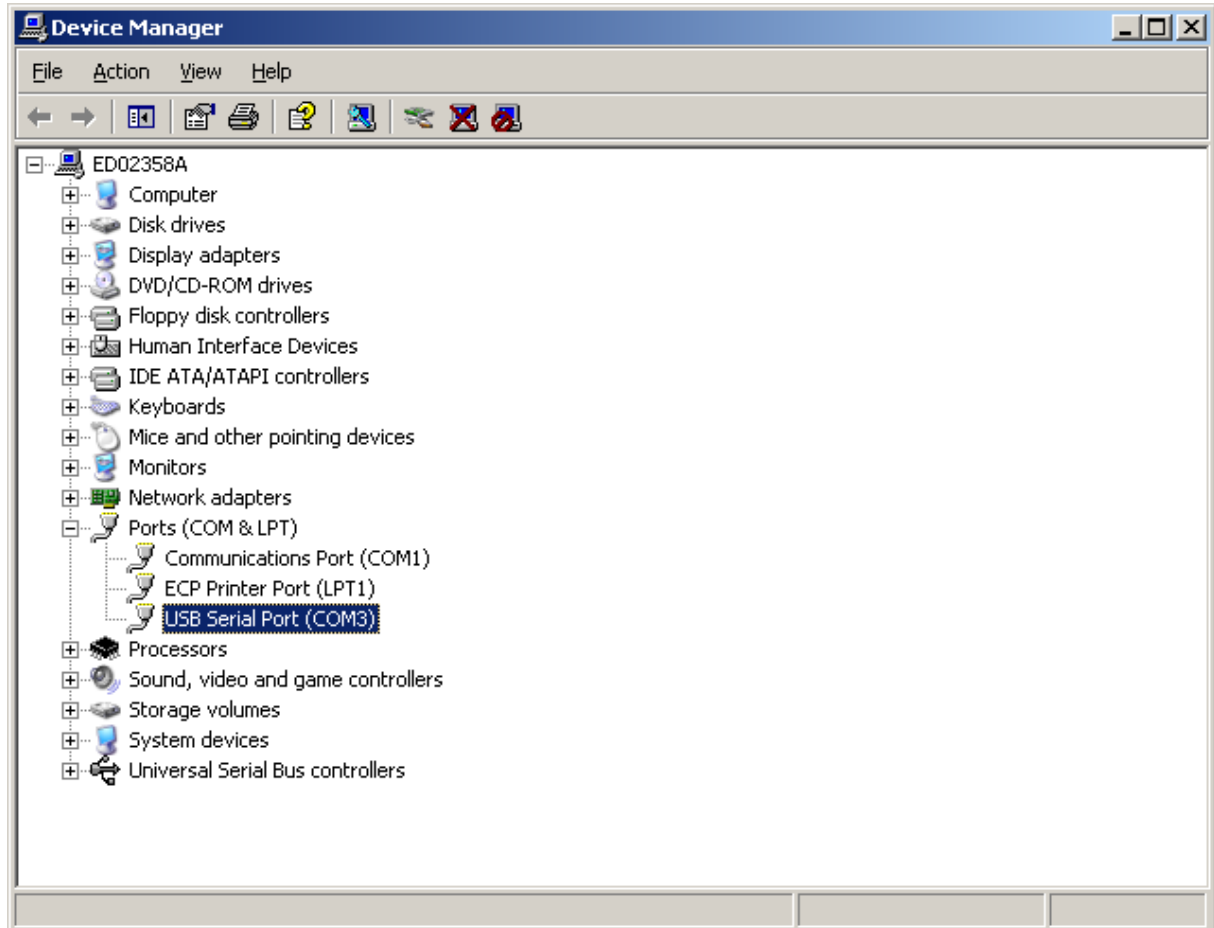


COM-Port

Where to find the virtual COM-Port number

After the installation of the drivers, the USB Converter is automatically assigned to a COM-Port number.

To find out which COM-Port number your computer set, open the device manager (Start – Settings – Control Panel – System – Hardware – Device Manager). In the category “Ports (COM&LPT)” you can find the “USB Serial Port” (only if your converter is plugged in). In parenthesis the COM Port number is shown. **The COM-Port number needs to be between COM1...COM9, otherwise it will not work!!**

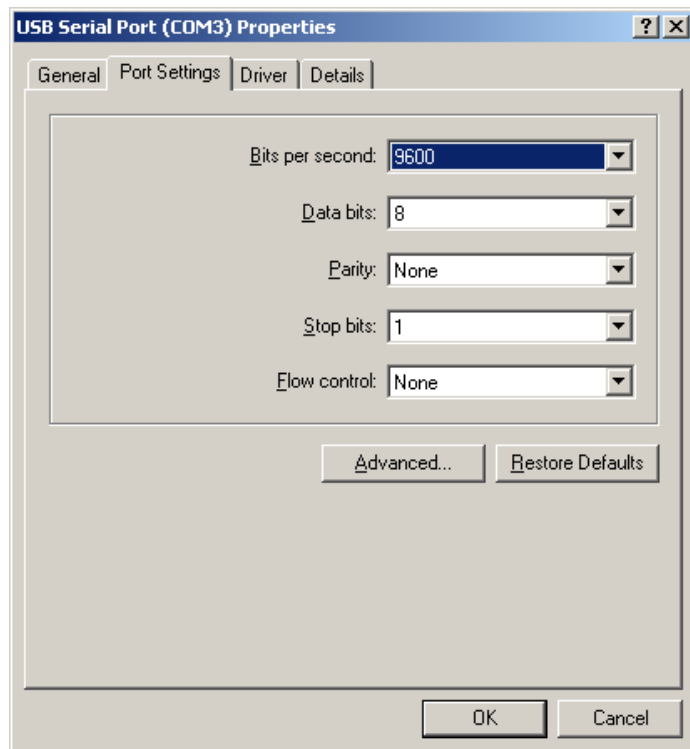


How to change the COM-Port number

To change the COM-Port number double click on the “USB Serial Port” in the device manager and click on the task “Port settings”.

Please click “Advanced” to get to the position where the COM-Port number is adjustable.

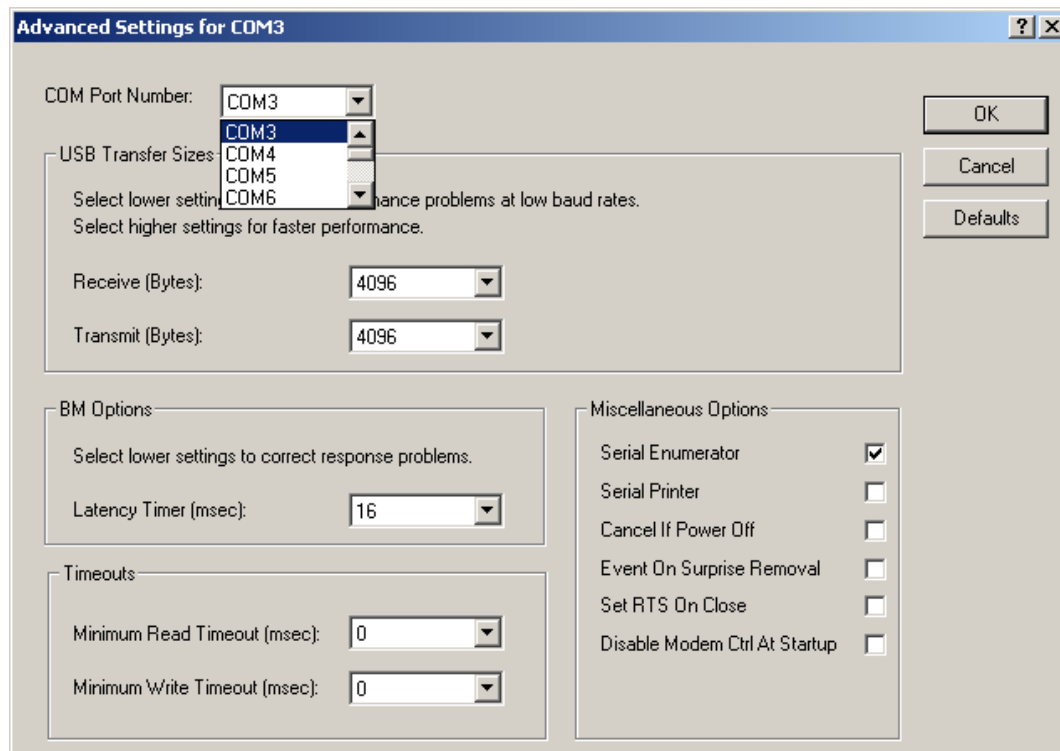




In the Toolbar “COM Port number” you can select you preferred COM-Port number. **Attention!! The COM-Port number has to be between COM1...COM9, otherwise it will not work!!**

After changing the COM-Port number, it is recommended to unplug/plug the converter.

You can change settings only with admin rights.



Uninstall

To uninstall the driver run D:\Uninstall driver\FTClean.exe and follow the program instructions. This File is on the Disc (K-104 USB Converter).

Driver

Actual drivers and information can be found in the internet:

<http://www.keller-druck.ch>

<http://www.ftdichip.com/Drivers/VCP.htm>

